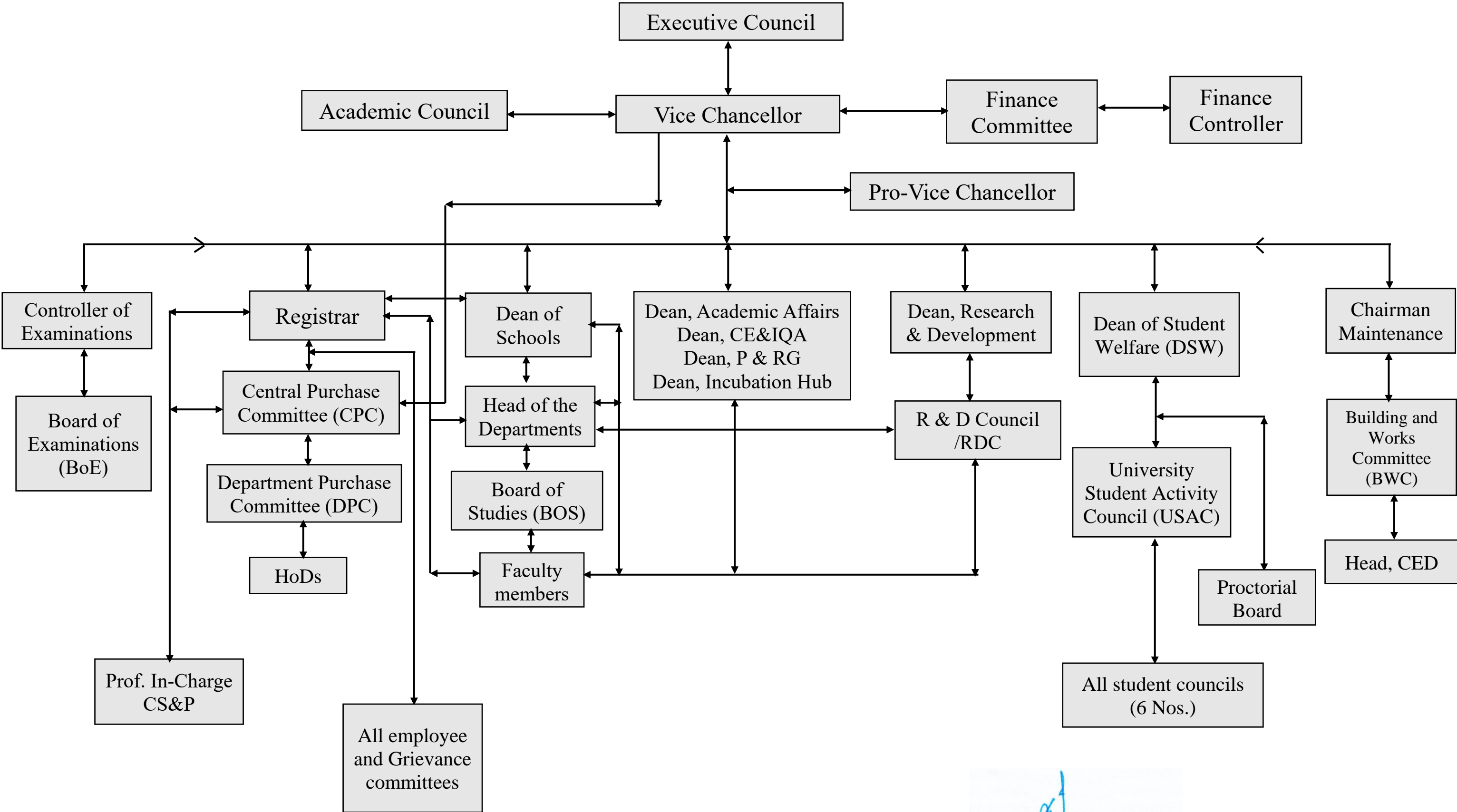


PARTICIPATIVE MANAGEMENT



↔ Implies mutual participation between the respected office bearers/authorities


Deputy Registrar
Harcourt Butler Technical University
Kanpur-208002

SUMMARY OF PARTICIPATIVE MANAGEMENT

This schematic presents participative management in the form of the organizational structure of HBTU Kanpur. In the schematic, the double arrow represents mutual participation between the respective office bearers/authorities.

It is evident that the **Executive Council (EC)** is the apex body of the University and the **Hon'ble Vice Chancellor** is the chairperson of this council. All the decision is taken in the meeting of the EC with mutual consent and agreement of the members.

The **Academic Council** gives inputs to Hon'ble Vice Chancellor for taking decisions related to Academic work.

All the decisions related to finance are discussed in **Finance committee (FC)** headed by the Hon'ble Vice-Chancellor. The financial management, budgeting, and utilization are carried through the account section, headed by the **Finance Controller** through Finance committee.

The Hon'ble Vice Chancellor is assisted by **Pro-Vice Chancellor** to carry out the various task as may be assigned by him from time to time.

There is participative interaction between the Hon'ble Vice Chancellor on one hand and the Controller of Examination (CoE), Registrar, Deans, and Chairman Maintenance on the other hand.

The decision related to examinations is taken by the Controller of Examination with input from the Board of Examination (BoE).

The decision related to purchasing at the department level is discussed in the **Department purchase committee (DPC)** headed by the **Head of Department (HoD)**. Whereas for central purchases all the items are discussed in the **Central purchase committee (CPC)** headed by Hon'ble Vice Chancellor with valuable input and participation from Registrar and **Prof. In-charge, Central store & Purchase (CS&P)**.

All the Schools (School of Engineering, School of Chemical Technology, School of Basic and Applied Sciences, School of Humanities and Social Sciences) are headed by respective **Deans of Schools**, and all the departments under these Schools are headed by the HoDs. All the decisions within the Departments and Inter-department are taken through mutual participation between **Deans, HoDs, and concerned Faculty members**. All the Deans are directly reporting to Hon'ble Vice Chancellor and assisting him in taking appropriate decisions on general administrative and academic matters. All Deans are discharging their duties with mutual cooperation and assistance from their concerned councils and staff.

All the decisions related to Research and development in the University are discussed in **Research and development council (RDC)** headed by **Dean, Research and Development**.

All the works related to student activity and welfare are carried out by the **Dean of Students welfare (DSW)**, assisted by **USAC**, the **Proctorial board**, and the various **Student councils**.

All the work related to construction is discussed in **Building and Works Committee (BWC)** headed by **Chairman Maintenance**, in general, i. e. **Head of the civil department (CED)**.